

County Recorder

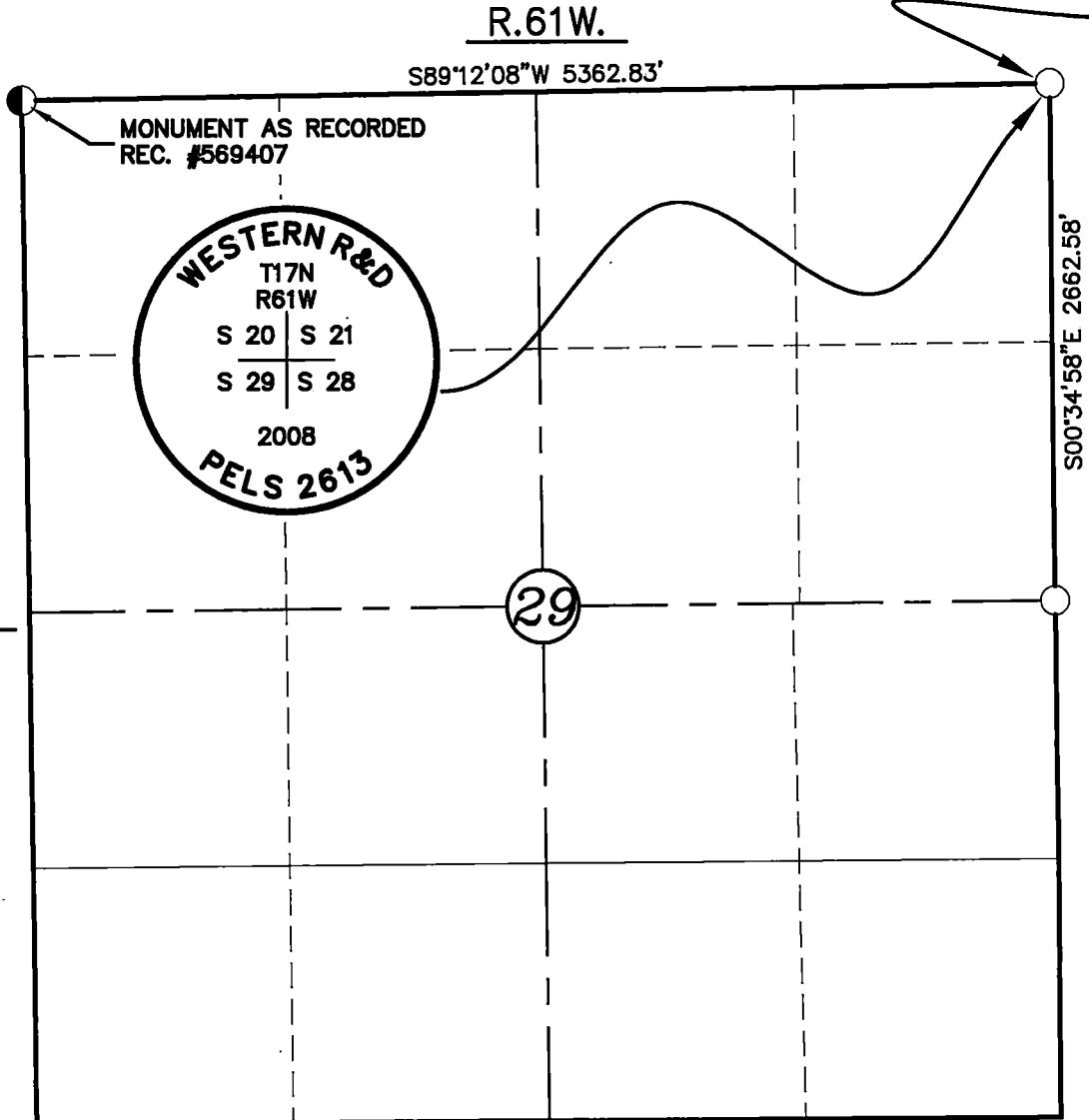
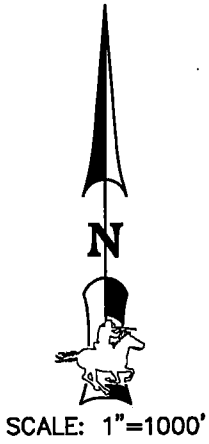
State of Wyoming Corner Record

(In compliance with the CORNER PERPETUATION AND FILING ACT, Wyoming Statutes, 2013 Section 33-29-901 through 33-29-910, and the Rules and Regulations of the Board of Registration for Professional Engineers and Professional Land Surveyors)

Reverse side of this form may be used if more space is needed.

Record of original survey and citation of source of historical information (if corner is lost or obliterated). Description of corner monumentation evidence found and/or monument and accessories established to perpetuate the location of this corner. Sketch of relative location of monument, accessories, and reference points with course and distance to adjacent corner(s) (if determined in this survey). Method and rationale for reestablishment of lost or obliterated corner.

EXISTING 2-1/2" DIA. ALUMINUM CAP IN ASPHALT HIGHWAY INSCRIBED AS SHOWN BELOW



LEGEND:

- - EXISTING 2-1/2" DIA. ALUMINUM CAP INSCRIBED PELS 2613
- - EXISTING 2-1/2" DIA. ALUMINUM CAP INSCRIBED PLS 2500



REC'D #: 773183
RECORDED 3/6/2020 AT 10:59 AM BK# 2662 PG# 1426
Debra K. Lee, CLERK OF LARAMIE COUNTY, WY PAGE 1 OF 1

Date of Field Work: 8/9/2019 Office Reference: JOB NO. 19086, BK. 275, P. 59 County: LARAMIE

1	2	3	4	5	6	7	8	9	10	11	12	13	14	15	16	17	18	19	20	21	22	23	24	25	
A																									A
B																									B
C	6																								C
D		5																							D
E			4																						E
F				3																					F
G					2																				G
H						1																			H
I																									I
J																									J
K																									K
L																									L
M																									M
N																									N
O																									O
P																									P
Q																									Q
R																									R
S																									S
T																									T
U																									U
V																									V
W																									W
X																									X
Y																									Y
Z																									Z
1	2	3	4	5	6	7	8	9	10	11	12	13	14	15	16	17	18	19	20	21	22	23	24	25	

APEX SURVEYING, INC.
ENGINEERING AND LAND SURVEYING
407 West Adams Avenue, Box 1751
Riverton, Wyoming 82501
(307)856-1647
tjohnson@apexsurveying.com

SEAL & SIGNATURE
Professional Land Surveyor
Thomas A. Johnson
8972
Date 8/30/2019
WYOMING

This corner record was prepared by myself or under my direction and supervision.

Corner Name: SECTION CORNER Section 20 21 T. 17N R. 61W; 6th P.M. Cross-Index No.: R,9